

ASSEMBLY INSTRUCTIONS

ITEM CODE : IN 3554

ITEM DESCRIPTION : BEDSIDE



1

Reverse the Bedside top & place the leg as shown & align the leg to match the apron.



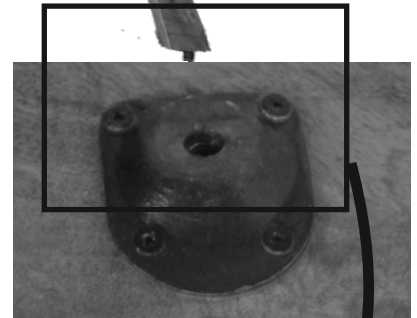
Twist the leg into the iron fitting slot by rotating it.

2



3

Fix the other legs in the similar way



4

Reverse the Bedside straight. Now your Bedside is ready for use

